

SOYBEAN PRICES**Edward Martey¹, Peter Goldsmith² and Nicolas Gatti³****Edward Martey****Peter Goldsmith****Nicolas Gatti****About the Authors**

Dr. Edward Martey is an economist with the CSIR-Savanna Agricultural Research Institute, Tamale, Ghana

Email: martey2@illinois.edu

Dr. Peter Goldsmith is the Director of the Soybean Innovation Lab and a Professor in the Department of Agricultural and Consumer Economics at the University of Illinois at Urbana-Champaign

Email: pgoldsmi@illinois.edu

Nicolas Gatti is a graduate student with the Department of Agricultural and Consumer Economics at the University of Illinois at Urbana-Champaign

Email: gatti3@illinois.edu



Obtaining soybean price data at either the farm gate or wholesale levels remains elusive in Sub-Saharan Africa because markets are immature, the crop is new, and data collection is relatively costly. Additionally, regional within-country price data are especially hard to obtain. Thus, formal price analyses of commodity markets in Sub-Saharan Africa are scarce and none to date involve soybean. Recently, we obtained access to a unique soybean price dataset in Ghana that helps provide some of the first insights into commercial crop price behavior in Sub-Saharan Africa. In this article, we share an overview of soybean prices in Ghana; however, a more technical analysis of pricing behavior appears in Martey et al, 2019.

Soybean production is a relatively new crop in Ghana and cultivated mostly by smallholder farmers under rain-fed conditions (MiDA, 2010; Akramov & Malek, 2012). The average area cultivated to soybean is less than two acres. Current domestic supply lags behind domestic demand by an estimated two thirds, and thus requires significant imports of soybean grain, meal, and oil (Gage et al., 2012; Eshun et al, 2018). The Northern region alone contributes about 77 percent of national production (SRID, 2012). National soybean production shows growth in Ghana since 2012 (SRID, 2015). Poultry and small-scale processing firms, as well as rising food oil demand, account for the expansion of production (Gage et al., 2012). Both the post-harvest committee and the National Food Buffer Stock Company, both government agencies tasked with price and supply stabilization, have been active in maize and rice markets, but are absent from the relatively nascent soybean sector.

The local price data covers the six major regions of Ghana; 1) Upper West, 2) Upper East, 3) Northern, 4) Brong- Ahafo, 5) Ashanti, and 6) Greater Accra (Figure 1) from 2011 to 2017. The first three markets are located in the northern three regions of Ghana. Techiman and Kumasi are located in the middle belt whereas the Accra location is in the southern coastal part of Ghana. The center of soybean production takes place in the Northern Region while utilization occurs in the middle Ashanti and southern greater Accra regions.

The mean prices of soybean at all locations during the study period vary between 8.90 - 17.17 US\$/bu. The average price, in decreasing order, of soybean per bushel in Accra is 17.17 US\$/bu followed by Kumasi (12.79 US\$/bu), Bolgatanga (12.03 US\$/bu), Techiman (11.78 US\$/bu), Wa (10.61 US\$/bu), Tamale (9.72 US\$/bu), and Chicago (8.90 US\$/bu) (Table 1). Thus, prices in Ghana, when measured at regional centers, are not “low” relative to international prices. The Chicago price does not reflect landed costs in Ghana. However, should domestic production expand to meet demand, it appears that Ghanaian farmers could be competitive with imports.

Using the coefficient of variation (CV), we find that prices in Tamale, the center of production, present the largest deviation from the mean of .35, followed by two other northern cities Bolgatanga (.30) and Wa (.28). The lowest CVs are Kumasi (.25), Accra (.24), Techiman (.23), and Chicago (.19). The results imply that the relative price of soybean in the industrial regions of Ghana do not fluctuate widely among the analyzed markets within the period of study. The coefficient of variation compares favorably to

the international market, especially in the industrial markets in the center and southern part of the country. However, the near double CV of the main producing area of Tamale reflects the lack of storage, weak infrastructure, and relatively high distances to markets.

The CV results are consistent with the relative price range, which is the ratio of the price range to the mean price. A comparison of the relative price ratios shows that Tamale at a relative range of 1.46 is significantly higher than all other markets, even the other northern markets (Table 1). This reflects that high production and low utilization in the Northern region, whereby supply is high at harvest, drives down prices, and then sustains relatively higher prices in the off season due to limited storage and carryover in the country, limited domestic supply, and a relatively high cost of dollar-based soybean, meal, and food oil imports.

The visual presentation in Figure 2 shows, as expected, the Tamale price often riding at or below the Chicago price because it serves as the nation's production region. The industrial central region, reflected by Kumasi and Techiman, shows opposite results with consistently higher prices relative to the Chicago price. Interestingly, Bolgatanga on the border with Burkina Faso shows relatively strong prices even though it lies only 104 miles away from Tamale. The relatively high price reflects the high demand and low supply conditions of Burkina Faso, the relatively weak transportation infrastructure between Bolgatanga and Tamale, and the high level of buy-side competition for Tamale's annual production between buyers in the north and central regions. Finally, the visual presentation does show two periods, pre-harvest 2011 and 2015, where Ghanaian prices separate from the international price. This reflects the relative slowness of the Ghanaian harvest that is completely unmechanized, and the poor storage and transport infrastructure that can isolate for brief periods of Ghana's agro-industrial center.

We identify five major and two minor trade routes involving the six selected market locations that capture the bulk of Ghana's soybean trade (Table 2). All the mean price spreads were negative except the adjacent markets of Bolgatanga-Wa and Kumasi-Techiman. The Tamale and Kumasi market pair lie the farthest apart, at 238 miles, among the regional market pairs, followed by Techiman-Accra (230 miles). Kumasi-Techiman, two industrial neighbors, are the closest (79 miles) regional market pair. As expected, the farthest market pairs experience relatively higher absolute mean price spread compared to adjacent markets. For example, in absolute terms, Techiman and Accra recorded a mean spread of \$5.39 US/bu while the closest market pair (Kumasi-Techiman) recorded a mean price spread of \$1.01 US/bu in absolute terms. The coefficient of variation (2.21) though indicates that these two adjoining central agro-industrial cities have high price dispersion from the mean price spread. This departs from our expectation given that the information flow across such markets should be rapid. However, the price per mile of distance travelled across the three key grain transport routes (Tamale-Techiman, Tamale-Kumasi, and Kumasi-Techiman) are relatively consistent, \$.013 USD. There appears to be relatively good information flow across these key market pairs.

The ratio of mean soybean price to distance in the Bolgatanga-Wa market pair is the lowest (.70) in absolute terms relative to the other regional market pairs. The secondary demand markets of Accra (far south) and Bolgatanga (far north) present significantly higher price differences per mile, as expected, as they compete with buyers from the agro-industrial center of the country (Kumasi and Techiman).

In sum, the traditional concern of low prices relative to international prices appears to be unwarranted. However, we use in our research regional market prices, not prices found at the farm gate itself. Smallholders producing small quantities, possibly combined with poor quality, limited storage, cash sales at harvest, and long distances from buying centers, will raise transaction costs and basis spreads. In addition, our research shows smallholder production inefficiencies due to low yields excessively raises costs per bushel as to potentially make small holders noncompetitive. The guidance for policy makers is not to confound regional price performance and integration with international markets with the challenges small holders face from poor scale economies, weak infrastructure, and low yields.

Table 1: Summary statistics for weekly soybean price data

Prices	N	Mean	Relative Range
Accra	80	\$17.17	1.08
Bolgatanga	80	\$12.03	1.25
Kumasi	80	\$12.79	1.02
Tamale	80	\$9.72	1.46
Techiman	80	\$11.78	1.05
Wa	80	\$10.61	1.10
Chicago	80	\$8.90	0.70

Note: Relative range equals the range in price over the period divided by the mean of price over the period.

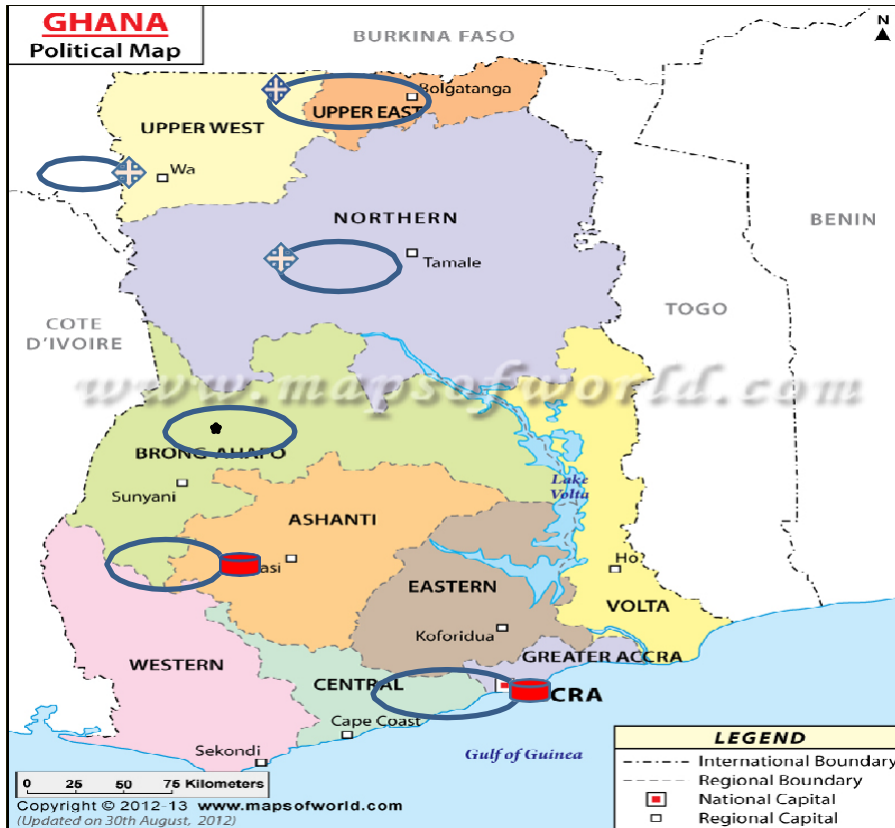
Table 2: Price Differences between Major and Minor Soybean Markets in Ghana

Regional Market Pairs Price Differences	Distance Miles	Mean \$/bu	Min	Max	CV	Price Difference (\$)/mile	Relative to the average
<i>Major routes</i>							
Tamale-Techiman	160	-\$2.10	-6.15	2.53	-0.72	-0.013	0.98
Tamale-Kumasi	238	-\$3.10	-8.68	4.00	-0.87	-0.013	0.97
Kumasi-Techiman	79	\$1.01	-4.93	5.85	2.21	0.013	-0.95
Kumasi-Accra	154	-\$4.38	-12.17	4.90	-0.82	-0.028	2.12
Techiman-Accra	230	-\$5.39	-14.04	1.96	-0.66	-0.023	1.75
<i>Minor routes</i>							
Tamale-Bolgatanga	101	-\$2.31	-6.40	3.21	-0.83	-0.023	1.70
Bolgatanga-Wa	147	\$1.39	-4.27	5.74	1.23	0.009	-0.70
Average	158	-\$2.13	-8.09	4.03	-0.06	-0.013	NA




Note: Mean is the average price difference subtracting the second city from the first city. CV refers to coefficient of variation. Min and Max represent minimum and maximum.



Figure 1: Administrative map of Ghana showing soybean markets



Notes

-  Represents soybean production zones in Ghana
-  Represents Techiman soybean market in Ghana
-  Represents the consumption zones in Ghana.

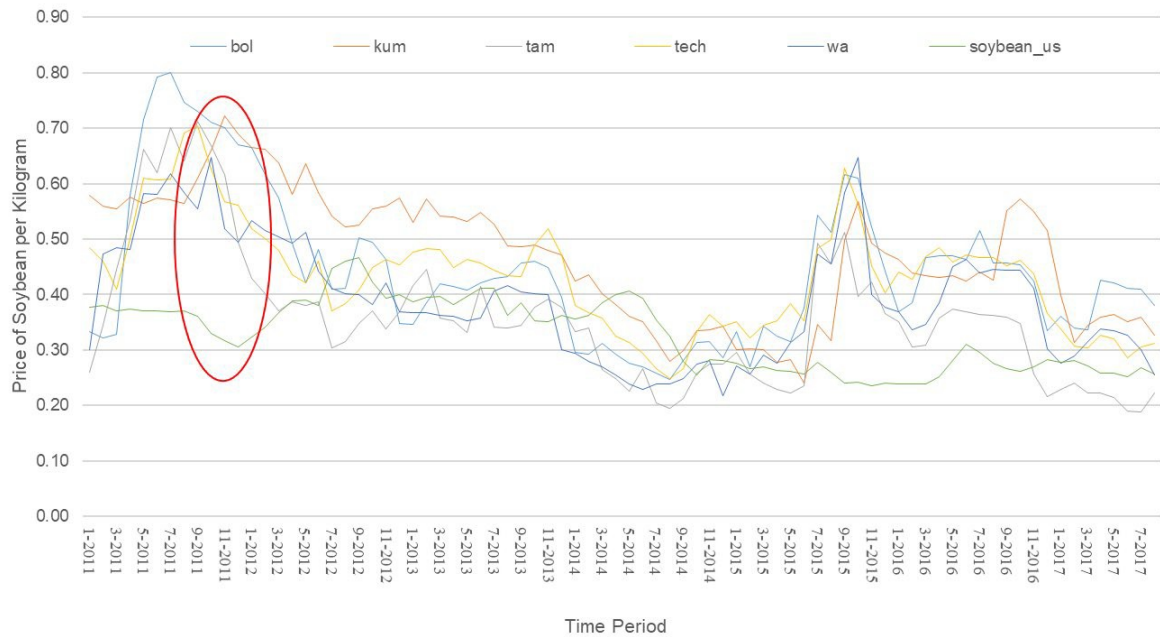


Figure 2: Domestic and international prices from 2011 to 2017

References

Akramov, K. & Malek, M., 2012. Analyzing Profitability of Maize, Rice, and Soybean Production in Ghana: Results of PAM and DEA Analysis. Working Paper 0028, Ghana Strategy Support Program, International Food Policy Research Institute.

Gage, D., Bangnikon, J., Abeka-Afari, H., Hanif, C., Addaquay, J., Antwi, V. & Hale, A., 2012. The Market for Maize, Rice, Soy, and Warehousing in Northern Ghana. USAID's Enabling Agricultural Trade (EAT) Project.

Eshun, J.K., Kwame, O., Boateng, E. & Kwaku, H. 2018. A Comprehensive Study on the Activities of Soy Processing Facilities in Kumasi and its Environs. University of Cape Coast Youthmappers, Department of Geography and Regional Planning. 41 pages.

Martey, E., Gatti, N., & Goldsmith, P. D. (2019). Assessing the effectiveness of inter-regional trade in Ghana's soybean markets. *Agribusiness: An International Journal*. Under review. 33 pages.

Millennium Development Authority. 2010. Investment Opportunity in Ghana Maize, Soya and Rice. Millennium Challenge Account Program (MCA), Accra. 23 pages.

Statistics, Research and Information Directorate, SRID of Ministry of Food and Agriculture. 2012. Production Estimates. Accra, Ghana.